



Company : Santos

Well : Netherby 1DW1

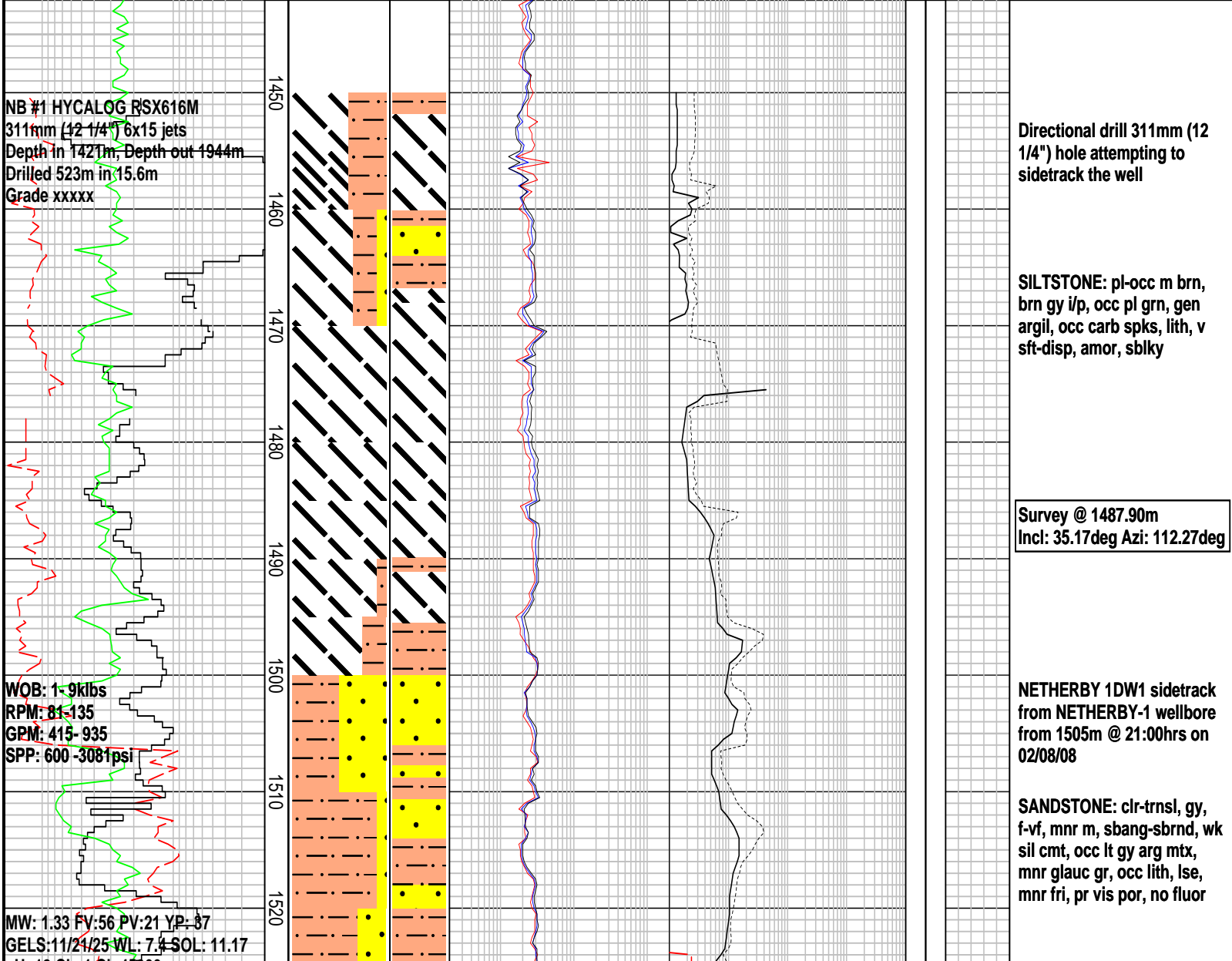
Interval : 1442.00 - 1966.77 meters

Created : 04/Aug/2008 5:45:24 AM

INTEQ

FORMATION EVALUATION LOG

WOB		LITHOLOGY %	INTERPRETED LITHOLOGY	RESISTIVITY		CHROMATOGRAPH				DIRECT FLUORESCENCE	CUT FLUORESCENCE	CALC	REMARKS
10 20 30 40				Resistivity (shallow)	Total Gas				Calcite				
ROP				2 20 200	1 10 100 1000	unit			0 100				
200 20				OHMM	Methane				Dolomite				
Gamma		2 20 200	Ethane				100 0						
50 100 150 200		OHMM	Propane										
GAPI		2 20 200	i-Butane										
		OHMM	i-Pentane										
			n-Butane										
			n-Pentane										
			ppm										



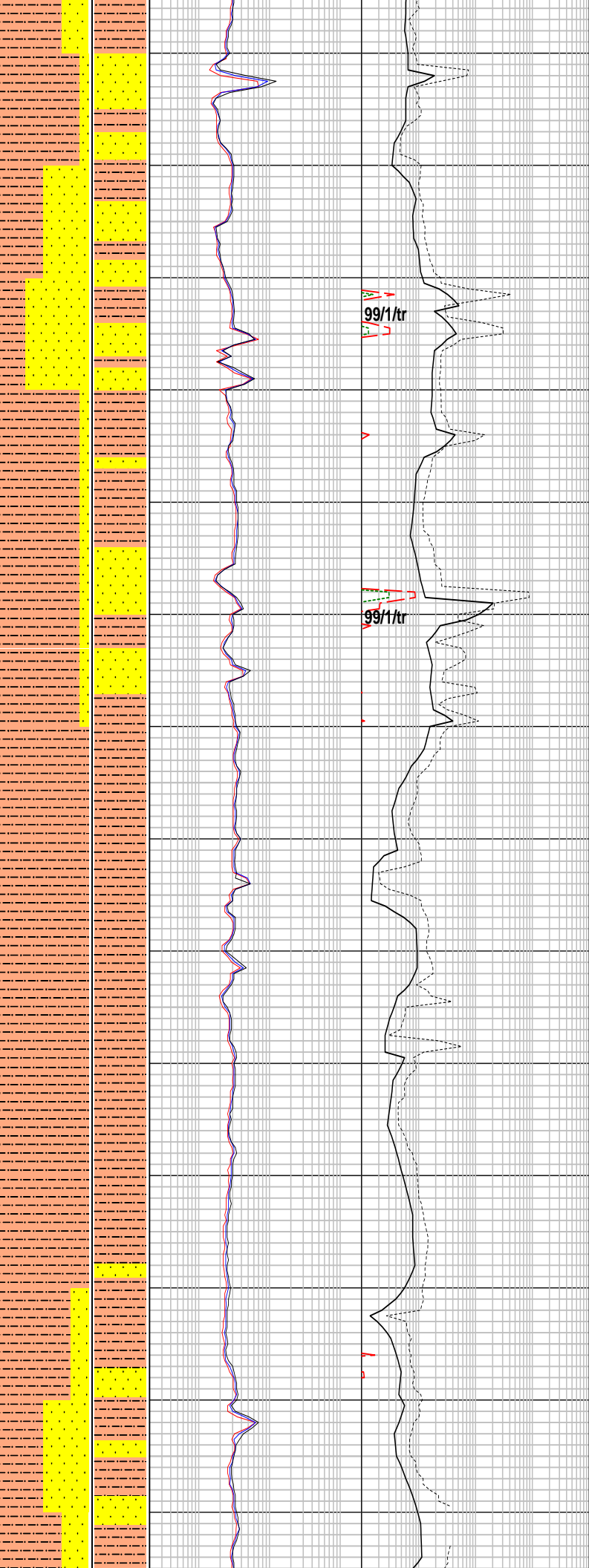
03/08/2008

WOB: 1-27kibs
RPM: 112-153
GPM: 520-800
SPP: 1410-3370psi

WOB: 4-24kibs
RPM: 1-204
GPM: 170-770
SPP: 1155-4125psi

WOB: 1-21kibs
RPM: 1-205
GPM: 300-760
SPP: 595-3625psi

1530
1540
1550
1560
1570
1580
1590
1600
1610
1620
1630
1640
1650
1660



SILTSTONE: pl-m gy brn, m gy, gen argil, mnr carb spks, mnr qz, disp-vsft, occ frm, amor, sblky i/p

SANDSTONE: clr-trnsp, off wh, dom f-m, mnr crs, mod srt, sbrnd-occ sbang, mod calc cmt, occ off wh argil mtx, mnr glauc grs & liths, fri-mod hd, lse i/p, v pr vis por, pr inf por,

Survey @ 1569.82m
Incl: 39.74deg Azi: 109.42deg

SILTSTONE: pl-m brn, m dk gy i/p, argil to mnr aren, occ carb spks, mnr py, sft-frm, amor, sblky

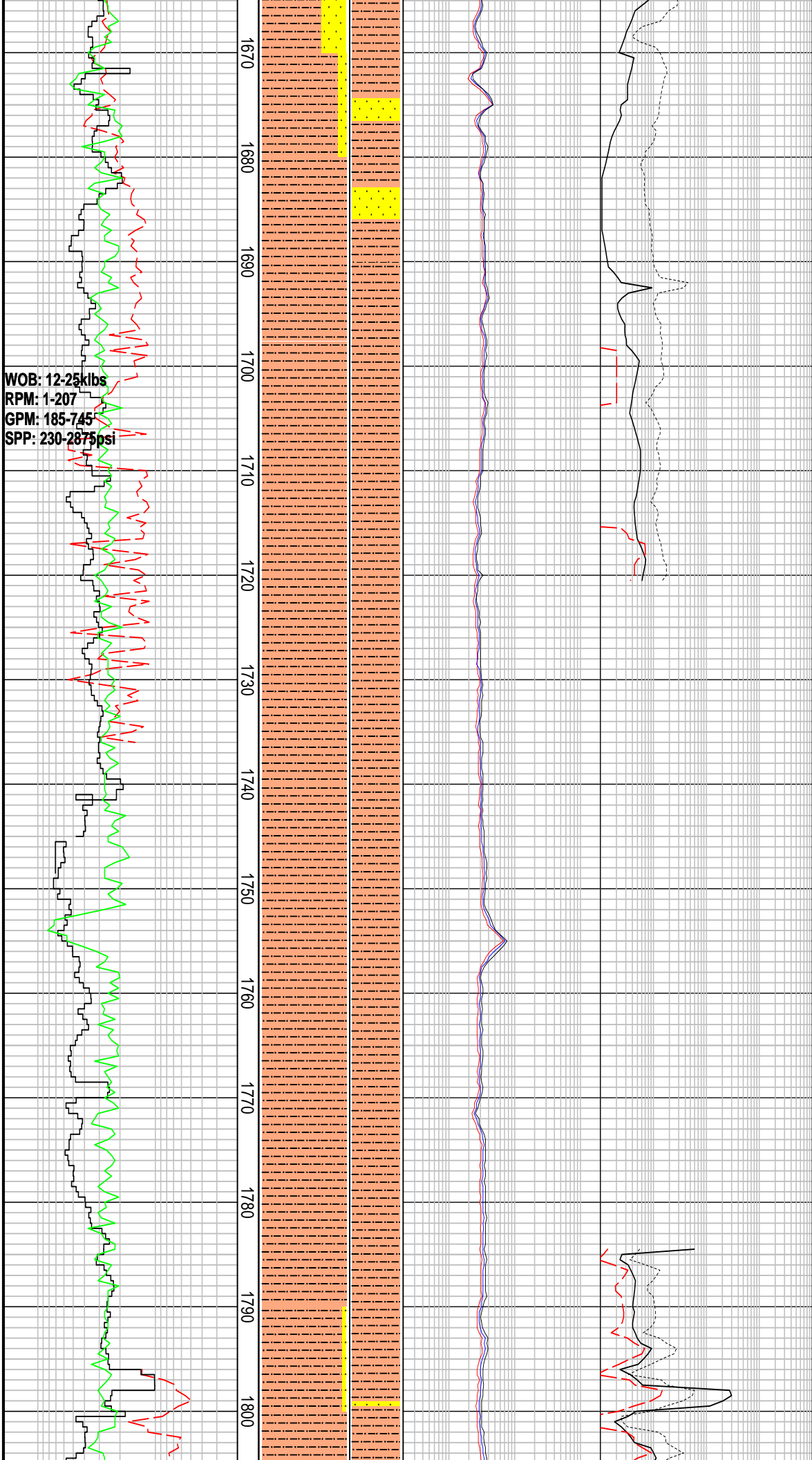
Survey @ 1600.60m
Incl: 42.06deg Azi: 111.11deg

SILTSTONE: m-occ dk gy brn, mnr argil-aren, occ carb spks, frm-mod hd, occ sft, sblky

Survey @ 1629.46m
Incl: 44.65deg Azi: 112.85deg

SILTSTONE: m-pred dk brn, mnr br gy, argil-mnr aren, r carb spks & micro mic, frm-mod hd, occ sft, sblky-blky, amor

SANDSTONE: clr-trnsp, off wh, dom f-m, mnr crs, mod srt, sbrnd-occ sbang, mod calc cmt, occ off wh argil mtx, mnr glauc grs & liths, fri-mod hd, lse i/p, v pr vis por, pr inf por,



SILTSTONE: m-pred dk brn, mn brnsh gy, argil-mnr aren, rr carb spks & micro mic, mnr glauc grs, frm-mod hd, occ sft, sblky-blky, amor

SILTSTONE: m-dk brn, gy brn, sft- frm, occ mod hd, disp, blky-sblky, rr aren, occ glauc grs, mnr carb spks, mnr calc incl

SILTSTONE: m-dk brn, gy brn, rr aren, occ glauc grs, mnr carb spks, mnr glauc grs, calc incl, sft-frm, occ mod, disp, blky-sblky

1736-1796m
 Computer Database Error No data

Survey @ 1804.17m
Incl: 64.78deg Azi: 123.05deg

SILTSTONE: m brnsh gy, gy
brn, loc aren, mnf carb
spks, rr calc frags, rr f gr
glauc, sft frm, mod hd i/p,
blky-sblky

Survey @ 1832.79m
Incl: 69.15deg Azi: 123.30deg

SANDSTONE: trnsl, lt gy, v lt
brn, vf-f gr, sbang-sbrnd, w
std, wk calc cmt, com off wh
argil mtx, tr vf grs glauc, fri,
pr vis por, no fluor

Survey @ 1860.88m
Incl: 73.78deg Azi: 123.07deg

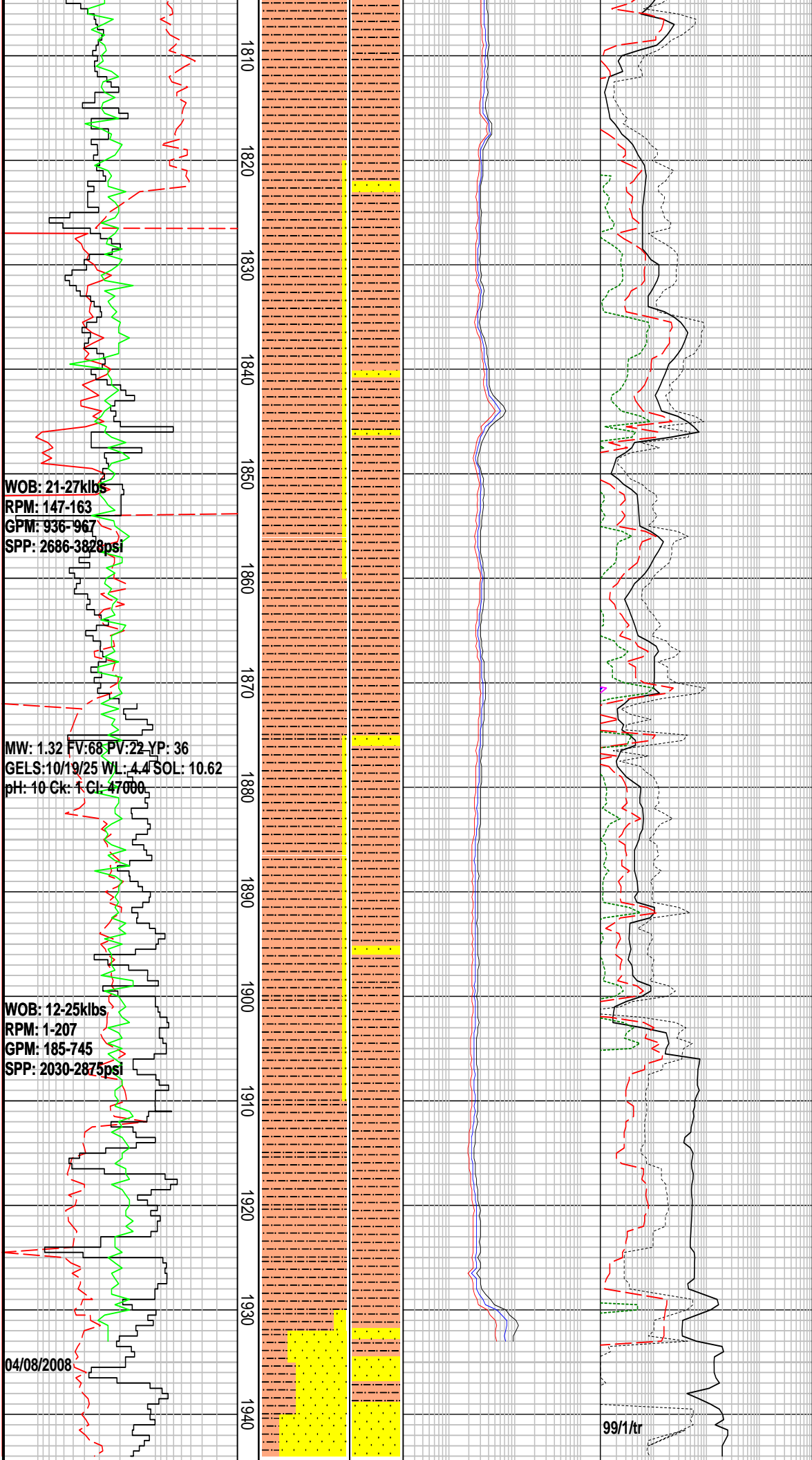
SANDSTONE: trnsl, lt gy, v lt
brn, v f-f gr, sb ang-sb rnd, w
std, wk calc cmnt, com off wh
argil mtx, tr v f gr glauc, fri, p
vis por, no fluor.

Survey @ 1889.08m
Incl: 77.80deg Azi: 122.38deg

SILTSTONE: dk grnsh gy, m
dk gy, m dk brnsh gy, vf
aren, rr f carb spks, abdt f
grs glauc, frm, blky-sblky

SILTSTONE: m-dk brnsh gy,
m-dk grnsh gy, argil, loc vf
aren, rr f carb spks, mnf-com
f grs glauc, frm, sblky-blky

SANDSTONE: off wh,
clr-trnsl, vf-f, mod wl srt,
sbrnd, wk sil cmt, com-abdt
off wh argil mtx, occ carb



WOB: 21-27klbs
RPM: 147-163
GPM: 936-967
SPP: 2686-3828psi

MW: 1.32 FV:68 PV:22 YP: 36
GELS:10/19/25 WL: 4.4 SOL: 10.62
pH: 10 Ck: 1 Cl: 47000

WOB: 12-25klbs
RPM: 1-207
GPM: 185-745
SPP: 2030-2875psi

04/08/2008

99/1/tr

spks & mnr frags frm-fri, mnr
lse, com rock flour, v pr vis
por, pr inf por, no fluor

Netherby 1DW1 reached
311m (12 1/4") hole section
TD @ 1944m MDRT on
04/08/2008

FORMATION EVALUATION LOG

WOB		MD meters 1:500	LITHOLOGY %	INTERPRETED LITHOLOGY	RESISTIVITY		CHROMATOGRAPH				DIRECT FLUORESCENCE	CUT FLUORESCENCE	CALC	REMARKS
ROP					Resistivity (shallow)	Total Gas	unit							
10	20				2	20	1	10	100	1000		0	100	
					OHMM									
					Resistivity (medium)		Methane							
200	20				2	20	-----							
Gamma					OHMM		Ethane							
50	100				Resistivity (deep)		Propane							
GAPI					2	20	-----							
					OHMM		i-Butane							
							i-Pentane							
							n-Butane							
							n-Pentane							
							100 1000 10000 100000							
							ppm							